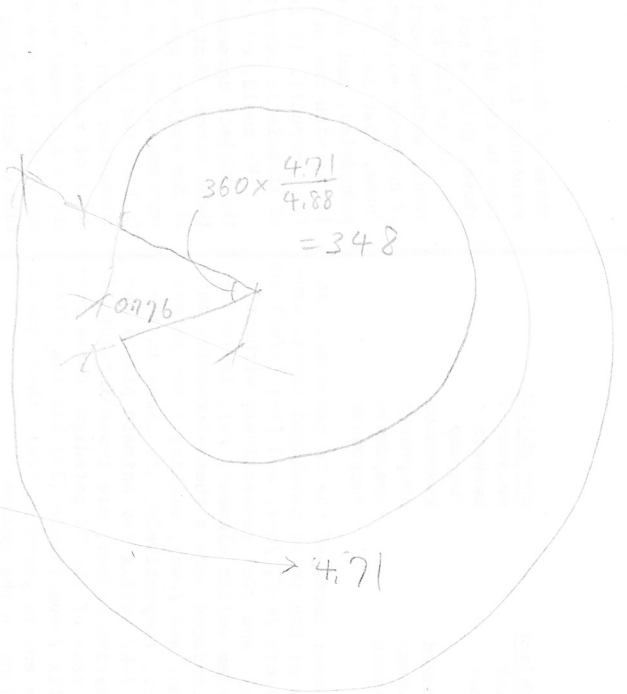
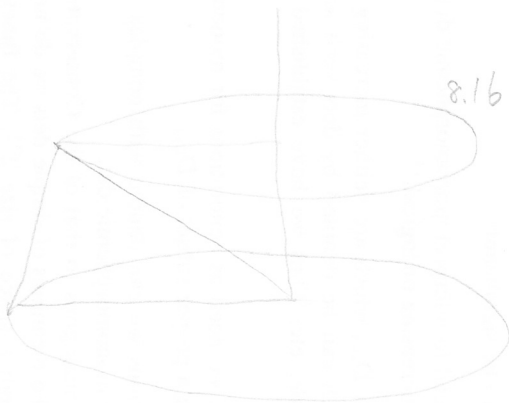


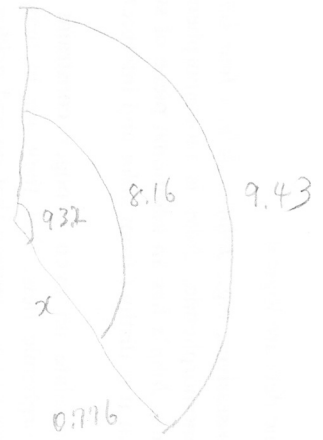
$$0.75 \times 2 \times \pi = 4.71$$



$$0.776 \times 2 \times \pi = 4.88$$



$$1.5 \times 2 \times \pi = 9.43$$



$$\frac{8.16}{x \times 2 \times \pi} = \frac{9.43}{(x + 0.776) \times 2 \times \pi}$$

$$x = \frac{0.776}{\left(\frac{9.43}{8.16} - 1\right)} = 5.02$$

$$360 \times \frac{8.16}{5.02 \times 2 \times \pi} = 93.2$$